

Mays Hill History and Heritage Timeline



Heritage Map of areas of high Aboriginal archaeological sensitivity.
Source, GML



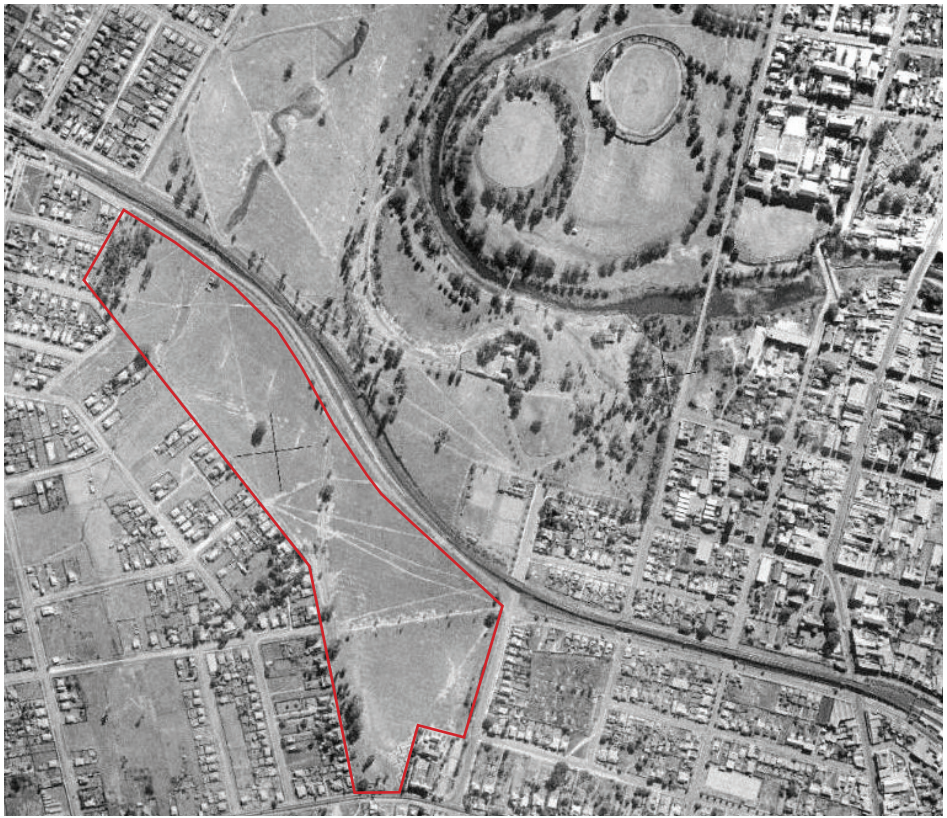
1844 Plan
Source, State Library of NSW



1889-94 Plan
Source, State Library of NSW



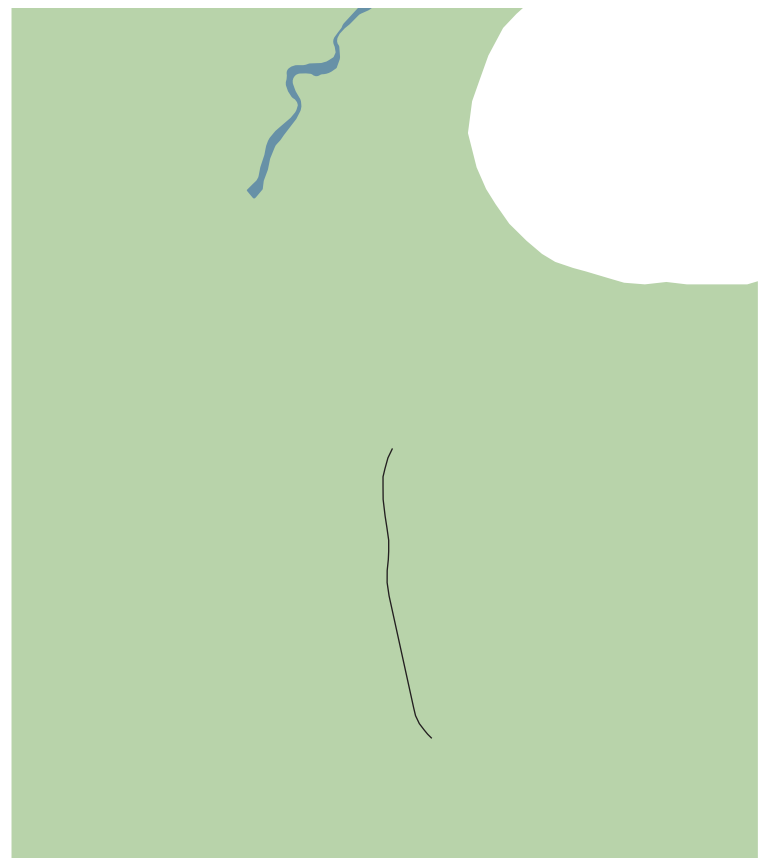
1904 Plan
Source, State Library of NSW



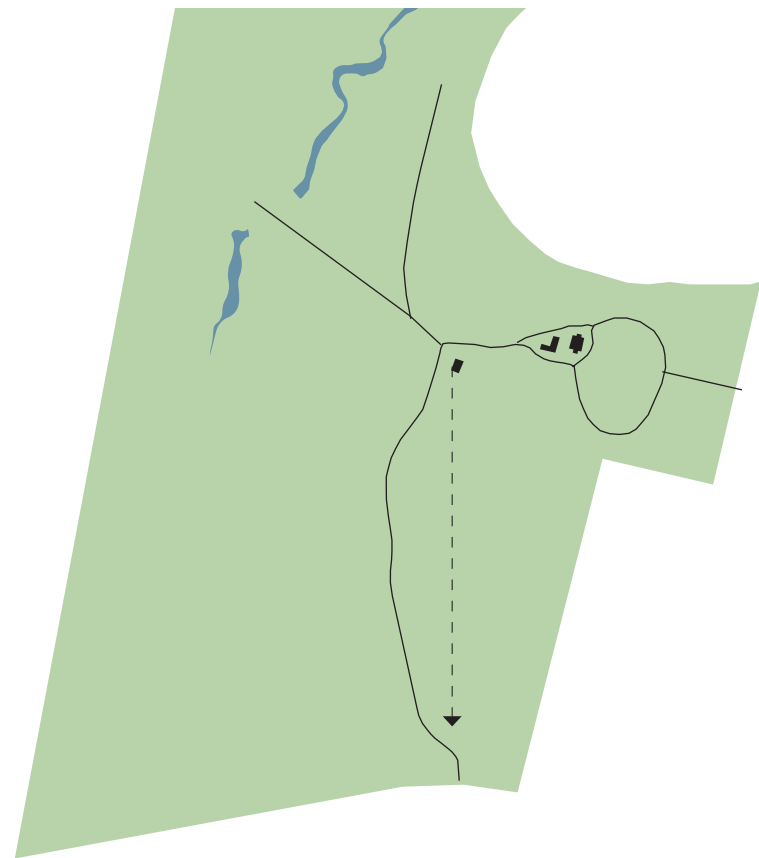
1943 Aerial photograph
Source, SixMaps



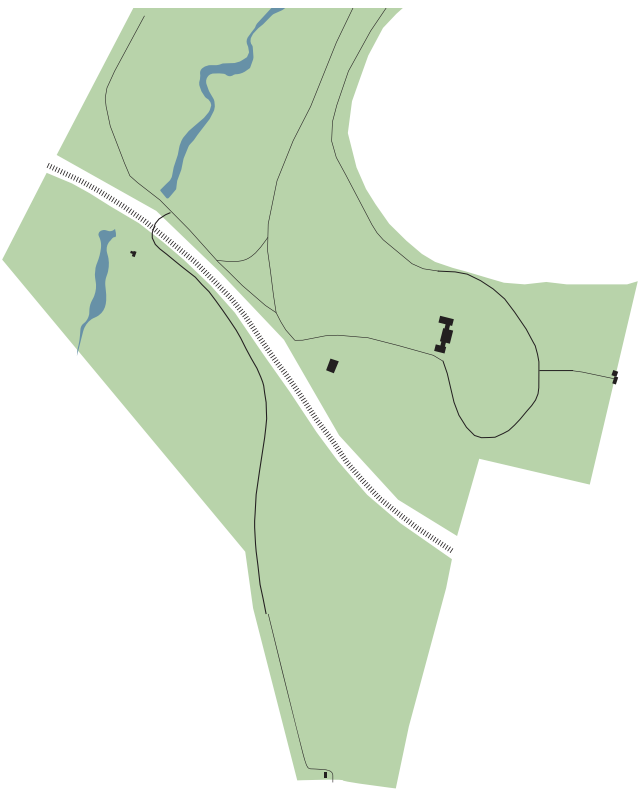
Current Aerial photograph
Source, SixMaps



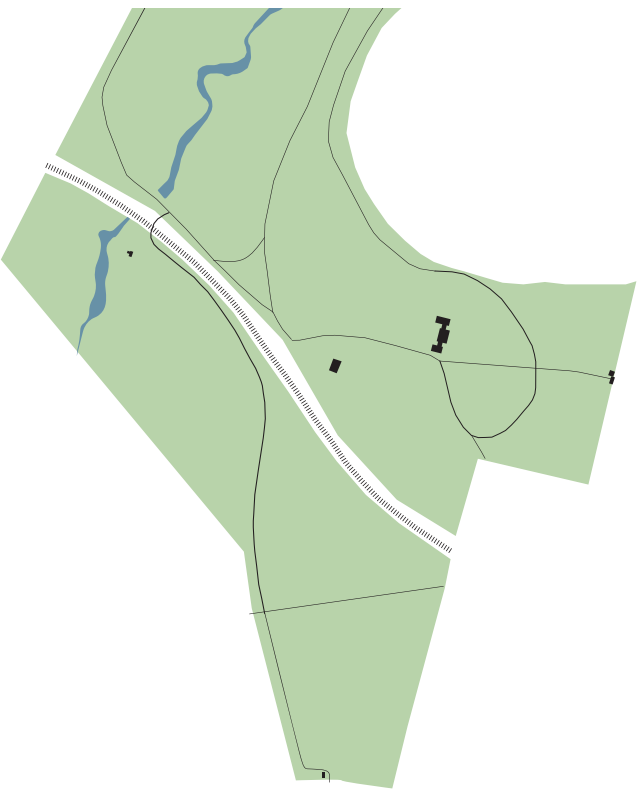
Pre-European settlement, the area was inhabited by the Darug People. The creek and the ridgeline would have been focus points of activity.



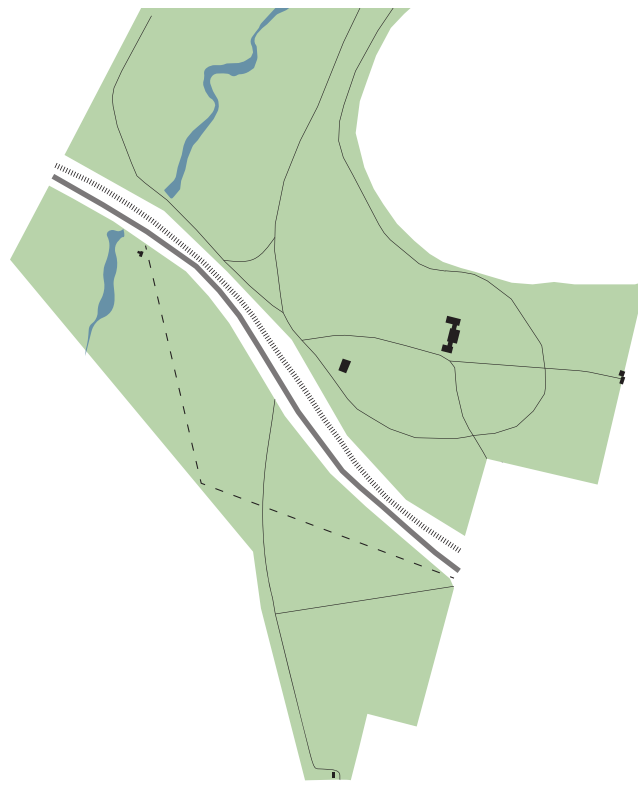
Early C19th: Mays Hill was part of the Governor's Domain, surrounding Government House. Governor's Avenue ran along the ridgeline from the Great Western Rd. 1820s Governor Brisbane built the Observatory and planted Hoop Pines to provide a southern bearing.



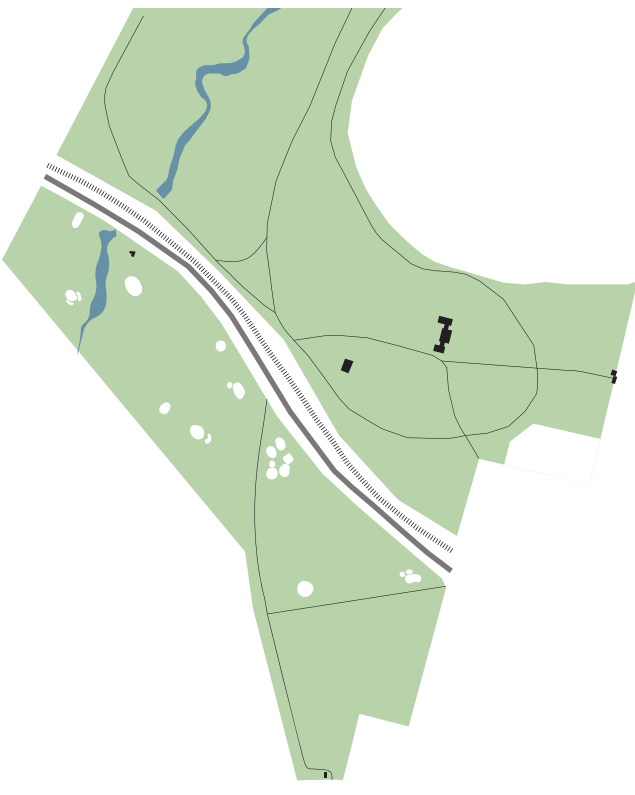
1857 Domain becomes Parramatta Park
1860 Rail line constructed through park
Realignment of Governor's avenue
Subdivision defines edge of Mays Hill.
1870s Gatehouses built.



Pathway in the location of Jubilee avenue established connecting residential area to city and station.
1902 Golf course built on both sides of railway.



1913 Parramatta High School built.
1929 Golf course is closed to open park for passive public recreation; park is mostly open grassland.
Park Parade road built along railway.



1937 Jubilee Avenue trees planted
1954 Golf course built on Mays Hill
2015 Golf course closes.